



Athletic Director Search

July 1, 2021

Shelton School and Evaluation Center
17301 Preston Rd., Dallas, TX 75252
www.shelton.org



**The
Education
Group**



MISSION

Shelton is a school and resource center dedicated to **making a difference** by serving and empowering the lives of **students who learn differently** because *not all great minds think alike.*



VISION

A world model of education for individuals who learn differently through—

- Education
- Evaluation
- Therapy
- Research and Outreach





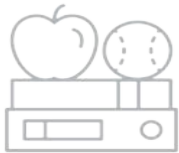
SHELTON FAST FACTS

SCHOOL



Founded: 1976
Grades: EC-12
Enrollment: 1000
Student/Teacher Ratio: 6:1
Average Class Size: 10
Student Diversity: 19%

FACULTY



Total Teaching Staff: 165
Average Experience: 17 years
Average Experience at Shelton: 9 years
Faculty of Color: 9%
Advanced Degrees: 56%

TUITION



Early Childhood: \$17,800
Pre-Primary: \$27,100
 (5 years - 1st grade)
Primary: \$27,700
 (1st grade - 2nd grade)
3rd-4th Grade: \$28,700
5th Grade: \$29,700
6th-8th Grade: \$32,600
9th-11th Grade: \$33,600
12th Grade: \$34,200
Financial Assistance: 13%

Memberships & Accreditation



Overview





OVERVIEW



The June Shelton School and Evaluation Center enjoys the distinction of being the world's largest independent school for intelligent children with learning differences. It is also the leader in empowering learning different students to leverage their uniqueness for success in college and the world. No other school holds such expertise, experience, services, and reputation under one roof. Founded in 1976, Shelton is dedicated to making a difference by serving and empowering the lives of students who learn differently. While the school is clearly the centerpiece of its mission, Shelton's bundled services offer much more. It encompasses three other major components, all open to the community—a speech, hearing, and language therapy program, an evaluation center, and an outreach/teacher-training program. Shelton is actively involved with research and collaborates with major medical institutions in the Dallas area, including Children's Medical Center and UT Southwestern Medical Center.

Campus & Facilities: In fall 2020, Shelton opened its doors for the 43rd time on its eighth campus now located on Preston Road. Situated on **30 acres** in North Dallas, this new and unified campus enhances both academic and extracurricular activities with state-of-the-art indoor and outdoor facilities. Academic spaces include **125 classrooms, 12 hands-on science labs and 1 robotics lab, 4 dedicated STEM rooms, makerspace for libraries, and a dedicated teacher-training classroom for adult learners.**

The Fine Arts Center showcases its black box theatre, band hall, choir room, scene shop, art gallery, labs for digital photography and music, and studios for dance, ceramics, sculpture and film. A bike and fitness path winds through the grounds of the campus. With the opening of the new Fine Arts Center in February 2021, Phase I of construction will be complete.



© Charles Davis Smith, FAIA.



OVERVIEW



Phase II of construction is on the horizon with the completion of the Fine Arts Center's 450-seat main theater, a full 1500 seating-capacity stadium, and field house. Shelton's full complex of Indoor and outdoor athletics facilities is described on [page 11](#). The Evaluation Center is housed nearby the main building where Shelton provides its clients with on-campus, advanced diagnostic techniques and strategies.



It is exciting to visit the new campus and ride on Shelton's wave of energy, enthusiasm and expectation. See for yourself and [take the tour](#).



OVERVIEW



SCHOOL

Accredited by the Independent Schools Association of the Southwest (ISAS), Shelton School is a co-educational, non-sectarian school that serves approximately 1000 students with learning differences in grades EC to 12. Shelton believes that learning different children learn best in a supportive environment that stresses multisensory learning techniques. The curriculum for the Early Childhood Program incorporates the best of traditional and Montessori educational strategies, emphasizing concepts and skills as well as subject matter. The School offers a comprehensive curriculum with a strong academic orientation and a nurturing family atmosphere that considers the physical, intellectual, emotional, and social growth of each student. In addition, the school offers a full array of extra-curricular activities. Shelton students are creative, progressive and resilient. They strive to excel in the classroom, succeed on the playing field, and shine on the performance stage. Through a customized approach within an environment that offers all the mainstream activities present at any other school, Shelton students have the confidence and self-motivation to accomplish greatness. To illustrate, the 71 graduates of the Class of 2020 were accepted at 118 colleges and universities across the country, including Brown, Purdue, Tulane, Southern Methodist, Syracuse, Texas A&M, and Clemson, to name a few. These same graduates received \$4.4M in merit scholarships.

EVALUATION CENTER

The Shelton Evaluation Center incorporates advanced diagnostic techniques to evaluate children, adolescents and adults with suspected learning disabilities and related disorders. The Evaluation Center offers a full range of assessment services. With a team of highly trained professionals, each client receives a roadmap for success. Since its beginning in 1976, the Evaluation Center has served more than 8,000 clients from the United States and abroad.



SPEECH, LANGUAGE AND HEARING PROGRAM

For more than 25 years, Shelton's Speech, Language, and Hearing Therapy Program has been widely recognized in the Dallas-Fort Worth Metroplex. Its mission is to provide quality services for the evaluation and treatment of preschool and school age children with developmental delays and speech and language disorders. Whether at Shelton, off-site, or via video conferencing, therapy services are provided to clients in a variety of ways and in various settings. More than 1,000 community speech and vision screenings are conducted every year.

OUTREACH AND TEACHER TRAINING:

Early on, Shelton staff realized that they could not possibly respond individually to all those seeking help for learning differences. The need was simply too great. Yet the School's keen desire and challenge has been to help more than its own student body, and thus the Shelton Outreach and Teacher Training Program was born in 1991. Shelton shares information and resources among schools and individuals. Their impact reaches far and wide as can be seen by teachers being trained in three countries, 12 states, and 27 cities. The new Athletic Director will be able to take advantage of this program at the outset.

SUMMER, THE SHELTON WAY:

In addition to providing training, Outreach coordinates Shelton's Summer School and Scholars Program, which serve the needs of Shelton students and other students from the community. The Summer School offers more than 130 academic and enrichment courses taught predominately by Shelton staff members. The Scholars Program challenges, stimulates and remediates minds of students who have experienced difficulty in the traditional classroom. Scholars is also available on Saturdays during the school year.



Shelton's Athletic Department

The Shelton School Athletic Department provides a learning experience that enhances the academic, social, emotional and physical development of the learning different child; it assists and supports the development of the whole child. The emphasis at Shelton is on developing the child first and specific physical skills or the fundamentals of the sport second. The Department's holistic approach and individual focus on each participant culminate in winning seasons and championships, a sense of pride and well-being for all involved, and the greatest sense of camaraderie among its student-athletes. Success in the Shelton Athletic and Physical Education Programs extends beyond the gym and playing field to students' academic pursuits, strength of character, sportsmanship, the development of leadership skills, and a lifelong commitment to physical activity and well-being.



GOALS OF THE ATHLETIC DEPARTMENT

- Promote accountability and responsibility
- Instill sportsmanship, teamwork and pride in accomplishments
- Develop concepts of teamwork by putting the desires of the team before personal desires
- Develop a respect for team, community, peers, authority and self
- Develop the ability to handle adversity and learn from mistakes
- Provide opportunities to develop friendships and develop social skills
- Build school pride and promote school spirit
- Improve physical fitness, cardiovascular fitness, strength and endurance
- Improve motor skills, perceptual skills, reaction times, and eye hand coordination
- Increase knowledge and understanding of the particular sport
- Test capabilities and help determine limits of physical ability and endurance



ATHLETIC FACILITIES

In August 2020, the Shelton community completed the much-anticipated move to its new campus on Preston Road. This impressive new campus (also described on p.6) includes a football/soccer field, track and field facilities, cross country running trail, baseball park, weight room, locker rooms, team film room and enhanced viewing for spectators. Three gymnasiums with multi-use courts, a mat room, athletic training room and dance studio are all located in the academic building. The athletic field house and 1,500- seating-capacity stadium will be completed in the second phase of construction.



PHYSICAL EDUCATION PROGRAM

Students are involved in Physical Education from the elementary grades on. Physical Education at Shelton supports and promotes a 21st century, contemporary, fitness-based model to encourage its students to lead healthy, productive, and physically active lifestyles. Physical Education has an individualized and adaptable curriculum with broad-based exposure to activities that foster lifetime fitness for social, emotional, and physical health. Among the many themes found in the PE curriculum are sportsmanship, motor skills and development, team building, lifetime fitness and activities, outdoor education, and cardiovascular and muscular fitness. Specific goals guiding Physical Education programming include:

- Empowering students to take responsibility for their own fitness
- Encouraging students to progress at their own level
- Fostering lifelong enjoyment by exposing students to a wide variety of fitness activities
- Educating students about the importance of fitness to their social, emotional, and physical health and well-being



ATHLETIC DEPARTMENT



ATHLETIC PROGRAM

The Athletic Program offers wide-ranging opportunities for students to participate in Charger team sports and spirit organizations during the middle and high school years. Shelton’s competitive sports are governed by the Texas Association of Private and Parochial Schools (TAPPS) for the Upper School and, for most Middle School sports, the Texas Association of Private Schools (TAPS). Options include the following:



SEASON	MIDDLE SCHOOL GRADE 6	MIDDLE SCHOOL GRADE 7 & 8	UPPER SCHOOL GRADES 9-12
FALL	Volleyball (girls) Cross Country (boys & girls)	Cross Country (boys & girls) Football (boys) Volleyball (girls)	Cross Country (boys & girls) Football (boys) Volleyball (girls)
WINTER	Basketball (girls) Basketball (boys)	Basketball (boys) Basketball (girls) Soccer (co-ed team)	Basketball (boys) Basketball (girls) Soccer (co-ed team) Swimming (boys and girls)
SPRING	Golf (boys & girls) Tennis (boys & girls) Track and Field (boys & girls)	Baseball (boys) Golf (boys & girls) Tennis (boys & girls) Track and Field (boys & girls)	Baseball (boys) Golf (boys & girls) Tennis (boys & girls) Track and Field (boys & girls)
SPIRIT ORGANIZATIONS (YEAR ROUND)		Cheerleading (girls)	Cheerleading (girls) Chargerettes (girls) Mascots (girls and boys) Wranglers (boys)

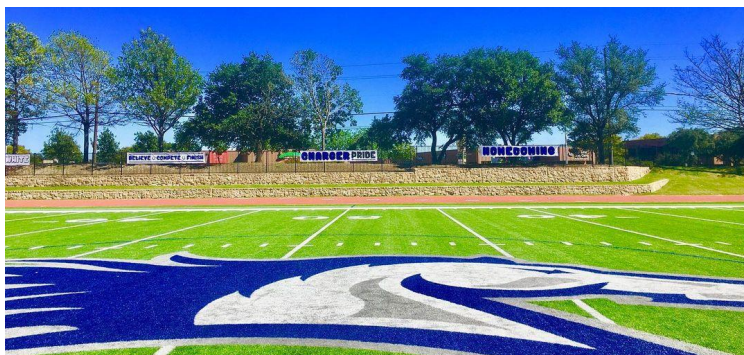


ATHLETIC DEPARTMENT



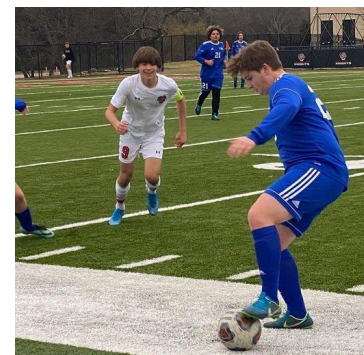
Athletic Department staff and coaches are highly skilled teachers and practitioners in the sports they coach and are committed to providing an unmatched experience during their students' athletic careers. They collaborate closely with other Shelton faculty and staff in creating an effective support network for all student-athletes.

A significant component of the Athletic Program includes focus on sports medicine. A comprehensive medical team comprised of orthopedists, specialists, physical therapists, nurses, sports nutritionists, and licensed athletic trainers ensures the safety of Charger athletes. The Athletic Program's student athletic training program educates students interested in sports medicine and is accomplished by providing an educational experience that effectively combines classroom instruction and practical experiences. These experiences, in addition to the many learning opportunities provided by members of the sports medicine team, allow student athletic trainers to deliver a high standard of care to Charger athletes.



SUMMER PROGRAM

In addition to providing comprehensive sports and physical education programs throughout the school year, Shelton's Summer School serves the needs and interests of Shelton students and other students from the community. The Summer School Sports Program offers a variety of training and skills development courses to upper elementary, middle school, and upper school students and are predominately taught by Shelton staff members.



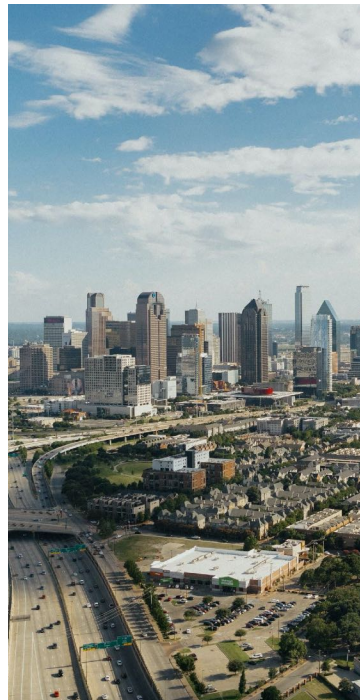
LOCATION

Dallas, Texas

Dallas is a thriving, global city with a diverse economy and vibrant culture. The city is ninth largest in the continental United States and is the main cultural and economic center of the 12-county Dallas-Fort Worth metropolitan area. At 7 million people, it is the fourth-largest metropolitan area in the United States. Dallas enjoys an economy based on banking, commerce, telecommunications, computer technology, energy, healthcare, and transportation.



A vibrant educational and intellectual city, the DFW area is home to more than 12 institutions of higher learning, including Southern Methodist University, Texas Christian University, the University of Texas Southwestern Medical Center, University of Dallas, University of Texas at Dallas, as well as the Perot Museum of Nature and Science and the Holocaust and Human Rights Museum. Four Nobel Laureates live and work among these institutions. It is a city with a large and collegial independent school network as well as an active non-profit and philanthropic community.



Downtown Dallas has undergone an impressive expansion and energized appearance with the Dallas Arts District providing leadership. The Dallas Arts District, the largest contiguous urban arts district in the nation, spanning 68 acres and 19 contiguous blocks, is home to the City's leading visual and performing arts institutions, whose range and depth make Dallas a destination for the arts that is unique in our country. The District is comprised of museums, performance halls, corporate offices, residences, restaurants, churches and a high school for the performing arts. There are numerous opportunities throughout the Metroplex for family outings—the George W. Bush Presidential Library and Museum, Dallas Arboretum, Fort Worth Botanic Garden, the Dallas and Fort Worth Zoos and Dallas Aquarium, to name a few.

Professional sports draw large crowds. The NFL Dallas Cowboys, MLB Texas Rangers, NHL Dallas Stars, NBA Dallas Mavericks, and MLS FC Dallas offer year-round opportunities for spectators. High school and college sports are not far behind when it comes to fan participation and interest. The cityscape is punctuated by multiple skyscrapers and handsome architecture. Iconic buildings include the Reunion Tower, JFK Memorial, and Dallas City Hall, designed by famed architect I. M. Pei. The Margaret Hunt Hill Bridge, with its signature steel arch, expands the Dallas skyline and is a notable landmark to the city's western corridor. As for weather, winters are mild, spring and fall are short, and summers are hot and sometimes humid. Air-conditioning reigns.

The Position

Shelton seeks an enthusiastic, experienced, and knowledgeable administrator to be its next Athletic Director. As a key leader of the School, the Athletic Director is a member of Shelton's Administrative Team and reports to the Executive Director. S/he is responsible for the administration and leadership necessary for the effective day-to-day operation of the department. A significant responsibility of the Athletic Director is to supervise the Department's 11 full-time staff and approximately 25 stipend coaches and instructors.





Key Responsibilities & Expectations



The successful candidate will understand and embrace the mission of The Shelton School, possess unquestionable character and integrity, exhibit exceptional interpersonal skills and leadership ability, and demonstrate excellent organizational, communication, and managerial skills. It is also essential that the new Athletic Director be wholeheartedly supportive of families who have children with learning differences.



KEY RESPONSIBILITIES & EXPECTATIONS

Experiences and duties include but are not limited to the following:

- Support Shelton's mission in service to students with learning differences and welcome appropriate training in working with these students.
- Develop and monitor progress in achieving short- and long-term goals for the Shelton athletic program.
- Oversee the development of, compliance with, and communication of key policies and procedures as well as applicable federal and state laws and regulations.
- Effectively represent Shelton and the athletic program in all interactions and activities (internal and external).
- Be accessible and responsive to all constituent groups; regularly attend and be fully engaged in athletic and school-related activities.
- Be responsible for most aspects of staff hiring and development in the Athletic/PE Department.
- In collaboration with the Business Office, review and approve an annual budget for the Athletic Department.
- Oversee appropriate use of the gymnasiums and all other athletic spaces.
- Manage the Master Schedule for Shelton Athletics; plan and ensure communication with staff and the school community about all athletic events and activities.
- Prepare a monthly report for the Board; update and maintain Athletic Department web pages and local media updates.

Qualities and Qualifications

PROFESSIONAL QUALIFICATIONS

The successful candidate will possess:

- Bachelor's degree in sports management, physical education or related field from an accredited college or university is required. Master's in athletic administration is preferred.
- Minimum five years coaching experience (required)
- Strength at building good relationships with Shelton constituent groups
- Effective promotion of positive sportsmanship in policy, word, and example
- Knowledge, development, oversight and the ability to monitor the effectiveness of athletic and physical education programs
- Knowledge of applicable federal and state laws and regulations regarding school district athletic programs, safety and health, and other areas of responsibility
- Ability to understand, apply, and use personal computers and software applications



For a more detailed job description: [CLICK HERE](#)



How to Apply

Applications may be submitted now through **March 15, 2021**. Interested applicants should email a **letter of interest**, **résumé**, and a **list of five (5) references** with all contact information (**in PDF format**) to karen@educationgroup.com or bob@educationgroup.com. For further information about the position and application procedures, please contact the school's search consultants:

- Letter of interest specifically addressing this position and school
- Resume (education and work experience)
- Statement of educational philosophy
- List of five professional references with contact information



Karen A. Drawz
karen@educationgroup.com



Bob Kirkpatrick
bob@educationgroup.com

The Shelton School is an equal opportunity employer.