



St. Mark's
Cathedral School

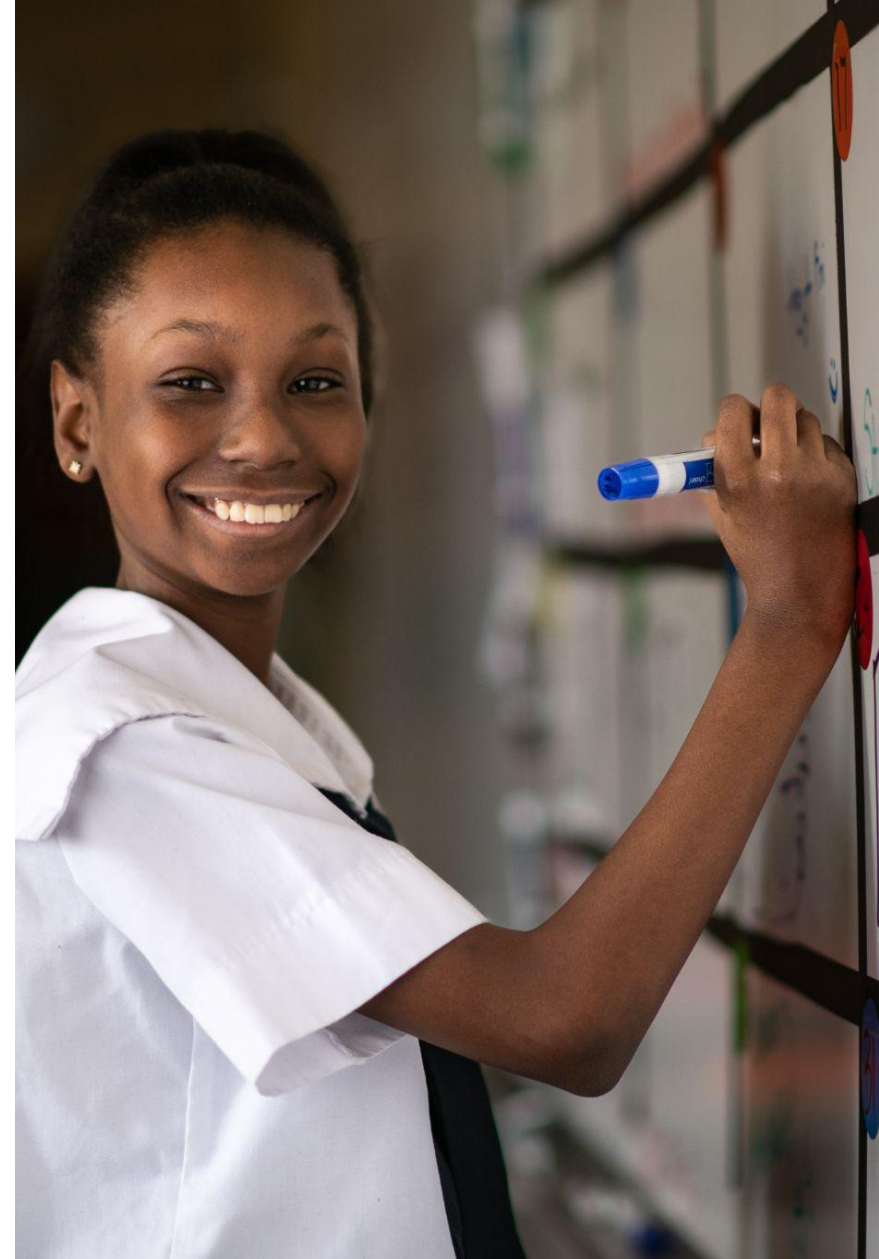
It all begins here.

St. Mark's School Profile And Candidate Description

Saint Mark's Cathedral School

2785 Fairfield Ave,
Shreveport, LA 71104

www.stmarksschool.com



Mission

The mission of St. Mark's Cathedral School is to value the individual who comes to us, to help that student to realize their potential and to foster a culture that reflects Christian values, intellectual curiosity, and a strong work ethic. Our goal is to develop a student who first feels self-confident educationally, socially, and spiritually and who can reach out to help others in our community.

SCHOOL PHILOSOPHY

The school is a traditional college preparatory institution that recognizes each child's value and seeks to help students fulfill their potential. We blend the best current research on teaching and learning with the best tried and true practices to create a traditional and progressive program. All is held together by the school's Episcopal identity and its commitment to providing each student with a loving, nurturing environment.

St. Mark's focuses on the personal growth of each student and strives for a balanced emphasis upon the academic, athletic, and aesthetic—sensory, social, and spiritual—in an environment conducive to the highest achievement possible within the confines of each individual's abilities. In addition, St. Mark's works in cooperation with each family as it teaches their children to meet their responsibilities, be considerate of others, face challenges, discipline themselves, and develop lifelong habits that will prepare them for further education and productive lives.



Spiritual Life

St. Mark's Cathedral School is committed to the goal of maintaining a diverse student body, and families of many different faiths play an essential role within the school. Through chapel services, service projects, and the integration of Christian principles into the curriculum, students have many opportunities to develop as spiritual beings. In addition, they are challenged to consider their relationships with God and their neighbors.

As an Episcopal school and a ministry of St. Mark's Cathedral, an essential part of the school's mission is fostering spiritual development. St. Mark's is committed to the task of helping all students grow in their understanding of their relationship with God and all persons.

EPISCOPAL IDENTITY

1. An Episcopal School is comprehensive and inclusive.
2. An Episcopal School values individual freedom and diversity of belief.
3. The unity of an Episcopal School is grounded in our worship and shared traditions rather than prescribed statements of doctrine.
4. An Episcopal School values reason to true understanding, and personal character is a quality to be admired.



THE PORTRAIT OF A ST. MARK'S CATHEDRAL GRADUATE

A St. Mark's student

- has a vision for a limitless future
- can voice concerns, beliefs, questions, and doubts, knowing that what they say matters
- has a thankful heart and love for God and all of God's people.
- can listen to and feel empathy for others
- has a heart for service
- is equipped with an academic base second to none and can succeed in any situation
- is well-equipped for the changing world of technology
- is well-written, well-spoken, and well-regarded
- has an appreciation for the arts
- exhibits both resilience and leadership, serving as a role model, a contributor, and an influence in the local, national, and global community



Overview

St. Mark's Cathedral School is a parish school for students aged two through the eighth grade. Offering a challenging, innovative curriculum in a nurturing, Christian environment, St. Mark's has earned a reputation for excellence.

By combining best practices with research in learning theory, St. Mark's curriculum provides children with vital academic preparation in a structured yet flexible setting. All classes and subjects engage various learning styles, including hands-on and applied to learn. St. Mark's focuses on helping each student identify their talents and areas of interest and teaches students how to build on those gifts for a lifetime of success.

Individualized instruction and classroom learning centers are combined with an emphasis on acquiring basic learning skills. The curriculum is challenging and demanding. Expectations are high. However, teachers work to help students fulfill and often exceed those expectations.

Through reading, writing, and arithmetic to socialization skills, critical thinking, and spiritual insight, St. Mark's provides an inclusive, nurturing Christian environment where students reach their full potential academically, athletically, artistically, and spiritually as we ignite passions to impact our world.



ST MARK'S CATHEDRAL AT A GLANCE

Founded:	1953
Tuition:	Three-Day preschool \$5,140 Full-time Preschool, \$7,300 Kindergarten through 8 th grade, \$11,845
Enrollment:	308
Total Employees:	63
Student-to-Faculty Ratio:	7:1
Average Class Size:	Preschool, 10 to 12 Kindergarten through 8 th grade, 14 to 16
Total Operating Fund:	\$4,146,208
Total Endowment:	\$611,248

SCHOOL HISTORY

A committee of parishioners of St. Mark's Church founded St. Mark's Day School in September 1953 as an early childhood program. Over the years, it evolved into St. Mark's Cathedral School, with a program extending from two-year-old through eighth grade. Throughout its history, the school has enjoyed the support of the Cathedral congregation, especially in the construction of the attractive facilities available for the school and its commitment to Episcopal education.

Traditions are essential at St. Mark's Cathedral School. They create community bonds and special memories; some provide opportunities to demonstrate classroom learning, some reflect the traditions of the Church, and some serve as rites of passage. Many of our traditions become special events for parent attendance. When parents and graduates reflect on their time at St. Mark's, these traditions often define the school's mission and values.



BOARD OF TRUSTEES

The role of the eighteen-member St. Mark's Cathedral School Board is to establish policy and ensure the school's financial stability. Members of the board do not supervise employees or operations of the school, nor do they represent special interest groups.

The Head of School represents the school to the School Board and reports at each regular board meeting. The board consists of the Dean, Wardens, and twelve to fifteen individuals. At least 60% of the School Board must be communicants in good standing of St. Mark's Cathedral. New School Board members are nominated by the School Board itself but formally elected by the Vestry. Each board member serves a term of three years.





The School

Academic excellence is the cornerstone of the challenging curriculum delivered in St. Mark's nurturing, Christian environment that allows students to explore their questions, passions, and interests in a hands-on, experiential learning environment.



ACADEMICS

PRESCHOOL: AGE 2 - KINDERGARTEN

At St. Mark's, we realize the tremendous growth, especially in social and cognitive processes, at this stage in life and strive to provide developmentally appropriate learning opportunities in fun and meaningful ways.

Fueled by our students' innate intellectual curiosity, our goal is to establish a foundation for a lifelong love of learning and inquiry.

We place equal importance on developing appropriate social skills, including empathy, conflict resolution, and how we can "show God's love" to our friends and family.

PRESCHOOL AT A GLANCE

- Average Class Size: 10-12 (PS2-PS4), 14-16 (K)
- Whole group, small group, and individualized work with teachers daily
- We learn through play—it is an essential part of our program.
- 1-2 enrichment classes per day
- Weekly chapel services
- Daily recess blocks
- Brain breaks involving movement activities and additional outside time throughout the day
- Letter and phonemic awareness
- Reading/language arts
- Body awareness and handwriting
- Contextualized, hands-on math to develop number sense
- Science and social living components embedded in classrooms and enrichment classes



ACADEMICS

LOWER SCHOOL - 1ST-5TH GRADE

St. Mark's Lower School strives to provide a nurturing environment where teachers and staff work hard to build strong relationships with parents to ensure students become independent learners and problem-solvers. The school's highly trained and experienced faculty understand our Lower School students' academic, social, and emotional needs and foster each child's various learning styles through differentiated instruction. A vertically aligned curriculum in each subject area ensures strong continuity and reinforces skills across the grades.

In grades 1-3, students have one teacher for all core subjects. In grades 4-5, students switch classes and have two teachers for all core subjects. Along with core classes, Lower School students have daily enrichment classes, recess, and PE.

LOWER SCHOOL AT A GLANCE:

- Average Class Size: 14-16 students (2 homerooms per grade)
- 1-2 enrichment classes per day; PE daily
- Social-emotional learning curriculum
- Chapel twice a week
- Daily 30-minute recess
- Public speaking and performance opportunities
- Field trips, including an overnight trip in 5th grade
- Service Opportunities
- Community-building opportunities with other grades (e.g., 1st & 5th grade Chapel buddies)
- Variety of athletic and extra-curricular offerings during and after school
- School Day: 8 a.m.-3 p.m. with drop-off as early as 7:30 a.m. and extended day options until 5:30 p.m.



ACADEMICS

MIDDLE SCHOOL: GRADE 5 – GRADE 8

Middle School is an important transitional period in the lives of children, and faculty are well-equipped to handle all aspects of students' development—academic, athletic, personal, social, and spiritual. With the full rotation of classes and individual subject areas, each grade level in Middle School provides an opportunity for students to assume responsibility for themselves in their academic surroundings.

Middle School students can participate as chapel assistants, in theater and film productions, join a club, or play on an athletic team. In addition, the Middle School has a robust student leadership program, student council, Fellowship of Christian Athletes, and the Junior National Honor Society.

St. Mark's graduates are armed with an academic base that is second to none and is confident they can compete and triumph in any situation. The challenging curriculum prepares students for high school and beyond.

MIDDLE SCHOOL AT A GLANCE

- Average Class Size: 14-16 students (2 homerooms per grade)
- Opportunities for high school credits in math, world languages, and science
- Technology: Google Classrooms, Chromebooks, digital research
- One-quarter of Christian Education per year
- 20+ quarterly electives offered
- Social-emotional learning curriculum
- Daily study hall
- Chapel twice a week
- Public speaking and performance opportunities
- Overnight educational class field trips in each grade
- Service leadership opportunities
- Monthly Middle School dances with local private schools
- Eight sports offered
- Eight clubs offered
- Flexible extended-day options and after-school activities



Beyond the Classroom

Middle School faculty assists in guiding students to realize inherent responsibility to the larger world. Developing the servant attitude is strengthened with service learning and community awareness. Acknowledging cultural diversity while developing leadership and collaboration skills requires respect and empathy. These important traits are modeled and nurtured in the classrooms, hallways, extra-curricular activities, and playing fields.

ATHLETICS

St. Mark's Cathedral School offers a variety of "no cuts" sports. Most of these are for Middle School students, although some include the Lower School. Some sports are organized directly through the school, while others are offered through independently operated programs that allow students to compete on behalf of the school. Sports offerings are: Basketball, Cheer, Cross Country, Golf, JETS Football, Running Club, Soccer, Swimming, and Tennis

Paw Spirit - 1/2 mile fun run and 5K road race

Field Day - Fiesta Field Day is a family-friendly day of games and competition for ALL ages, followed by an after-party held by the St. Mark's Cathedral School Parents' Club.

Summer - Imagination Station (a traditional day camp) and specialty summer camps offer a wide variety of weekly programs for ages 3-13. Activities are tailored to each age group, including art, computers, sports, reading, writing, theater, and more.



SHREVEPORT LOUISIANA

An excellent place to live with its beautiful green spaces, business-friendly environment, and low housing prices, Shreveport is the third largest city in Louisiana. Founded in 1836 and established at the juncture of the Red River and the historic Texas Trail, Shreveport is the educational, commercial, and cultural center of the Ark-La-Tex region. While Shreveport's gumbo, Jambalaya, and BBQ options are every bit as good as their reputations suggest, the identity of Shreveport, unlike that of New Orleans, is not rooted in Cajun-Creole traditions but a blended Southern culture. It is the home to five major universities and the headquarters of Amazon, Regions Financial Corporation, JPMorgan Chase, and AT&T Mobility. In addition, American, Delta, and United Airlines fly out of Shreveport Regional Airport.



THE POSITION

St. Mark's seeks a dynamic, enthusiastic, engaging Head of School to begin July 1, 2023, who is devoted to the school's Episcopal mission, appreciative of its parish school history and prepared to work closely with the Board of Trustees to secure a vibrant vision for the school's future. St. Mark's Cathedral School is an Episcopal parish school for students aged two through the eighth grade offering a college preparatory curriculum in a nurturing Christian environment. This is an exceptional opportunity to lead a highly regarded private school with an unwavering commitment to student success and an enduring grounding in its Episcopal identity. Starting July 1, 2023, the new head will lead with energy, empathy, and transparency and partner with others to shepherd St. Mark's Cathedral to a new era of growth and vitality.

The ideal candidate(s) will offer most or all the following qualities and qualifications.

PROFESSIONAL QUALIFICATIONS

- A proven educator with a passion for early childhood through eighth-grade education who will emphasize academic excellence by providing a curriculum that challenges students and supports creative, thought-provoking, and rigorous learning experiences, including all aspects of college-bound educational programs, teaching methods, and current practices in the best independent schools
- A creative problem-solver that values listening before action and who can connect and communicate effectively and transparently with employees, parents, students, the Dean of St. Mark's Cathedral, and the Board of Trustees to keep these groups appropriately informed of school events, key decisions, and the school's vision for a shared future
- An influential advocate of the school with expertise in optimizing the school's value proposition, developing strategies and formulating effective marketing and branding approaches, and determining, with faculty input, age-appropriate enrollment procedures that enroll mission-appropriate students and curtail attrition
- An insightful leader with experience hiring, retaining, and mentoring an excellent administrative team, with a leadership approach that combines clear expectations with collaboration, decisiveness, and resolve
- An innovative administrator who will implement an exceptional academic curriculum, including top-notch fine arts, extensive and competitive athletic offerings, and steadfast spiritual development
- A strategic thinker with business acumen, an entrepreneurial spirit, and a successful record in financial management, an influential fundraiser and relationship builder who can articulate the hopes of the St. Mark's community

THE POSITION

PERSONAL QUALITIES

- An experienced educator that makes decisions in the best interest of the faculty, staff, students, and the school
- A fair-minded manager with good communication skills, comfortable making consistent, fair, and firm decisions, communicating those decisions effectively, and delegating responsibilities as appropriate
- A passionate learner with great respect for the art of teaching and the joy of learning
- A relationship builder who enjoys knowing and being known by students, faculty, staff, parents, and alums and who provides a visible presence in the daily life of the school
- A dynamic leader who reinforces the school's warm, vibrant, and student-centered culture and who appreciates the deep commitment of the faculty and staff at St. Mark's Cathedral School
- A role model in our community and an ambassador for St. Mark's Cathedral School, and ultimately, someone that will call St. Mark's and Shreveport home

SCHOOL STRENGTHS

The new Head of the School will benefit from the numerous strengths at St. Mark's Cathedral School. They include:

- happy and active students who thrive academically, socially, physically, and emotionally and who exhibit a strong love for St. Mark's, its core values, and its teachers,
- thoughtful and faithful faculty and administration who promote mutual respect, active scholarship, and responsibility in and out of school,
- committed and dedicated Trustees who know and understand parish school governance and best trusteeship practices and provide an Episcopal empowering education to the Greater Shreveport Area,
- a devoted parent community that expects and strongly supports academics, quality fine arts, athletic excellence, student leadership, diversity, and spiritual formation,
- a debt-free balance sheet, and
- a learning community dedicated to continual school improvement.

THE POSITION

OPPORTUNITIES AND CHALLENGES

The New Head will need to:

- nurture and sustain St. Mark's Cathedral parish school model, bolster the school's already outstanding relationship with St. Mark's Cathedral and the parish community
- work collaboratively with the Board of Trustees to provide a vision for the future, develop the next long-range strategic plan and the financial plan to ensure its success, which includes increasing enrollment through mission-appropriate students and increasing employee compensation
- build upon the fifteen-year tenure of the current head of school
- enhance faculty culture, enrich programs, curriculum, and technology, offer salaries at a competitive level, ensure a culture of excellence
- advance the school's financial position through balanced operating budgets, increased enrollment and endowment, sustainable financial management, and capital growth



To Apply

Prospective candidates should send the following materials in a single PDF document to the search consultants:

- Letter of interest specifically addressing this position and school
- Resume (education and work experience)
- Statement of educational philosophy
- List of five professional references with
- contact information

Candidates will be evaluated as materials are received.



Susan Lair, Ph.D.
EXECUTIVE COACH, SEARCH CONSULTANT
slair@educationgroup.com



Jay Philpott
EXECUTIVE COACH, SEARCH CONSULTANT
jay@educationgroup.com